

Canopy
Touch 60 cm
White



EAN 5414425008940

Energy label

▪ Energy Efficiency class (EEIhood)	C
▪ Annual Energy Consumption (kWh/year) (AEChood)	64,9
▪ Fluid Dynamic Efficiency class (FDEhood)	C
▪ Lighting Efficiency class (LEhood)	C
▪ Grease Filtering Efficiency class (GFEhood)	C

Functions & features

▪ Control method	Touch control
▪ Number of speeds	3 + power
▪ Automatic Power revert (minutes)	6
▪ Motor	Integrated
▪ Sound absorber	Integrated
▪ Recirculation	Optional
▪ InTouch function	Optional
▪ Auto stop	▪
▪ Delayed switch off (minutes)	10
▪ Number of grease filters	1
▪ Grease filter	894020
▪ Grease filter cleaning indication	▪
▪ Recirculation filter cleaning indication	▪

Dimensions

▪ Product dimensions (WxDxH) (mm)	560 x 301 x 331
▪ Width flange (mm)	10
▪ Dimensions cut-out opening (WxD) (mm)	545 x 286
▪ Min dimensions cabinet (WxDxH) (mm)	x 600 x
▪ Advised mounting height induction hobs (Hmin-Hmax) (mm)	650 - 750
▪ Advised mounting height gas hobs (Hmin-Hmax) (mm)	650 - 750
▪ Advised mounting height ceramic hobs (Hmin-Hmax) (mm)	600 - 750
▪ Diameter outlet (mm)	125
▪ Position exhaust	Right, Top, Left, Back, Front

Lighting

▪ Functional lighting type	TL 5
▪ Dimmable light	-
▪ Soft-ON/OFF	-
▪ Total energy consumption functional light (W)	26

Airflow and noise level

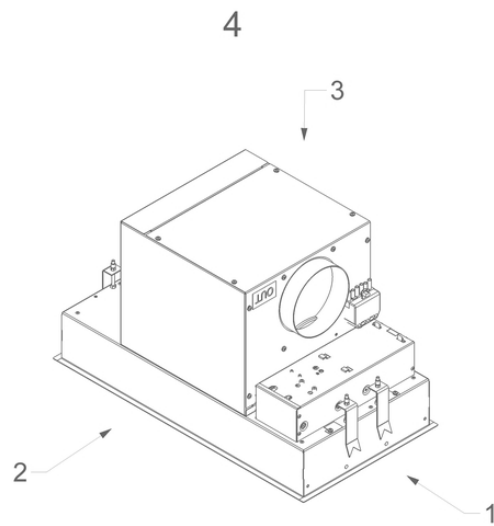
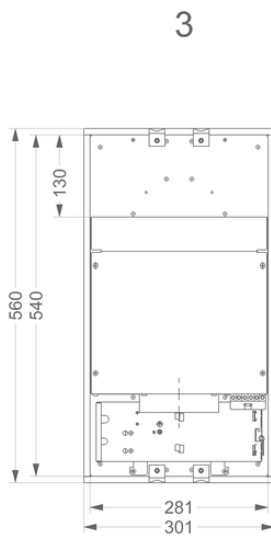
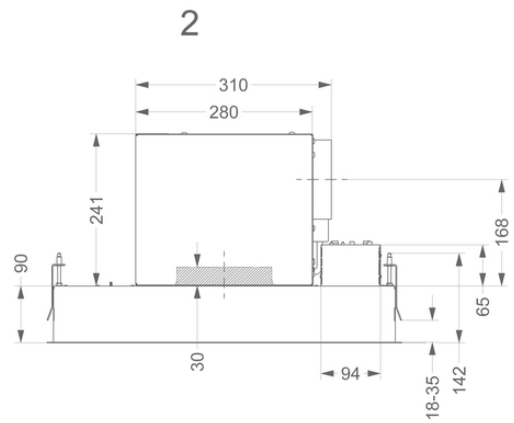
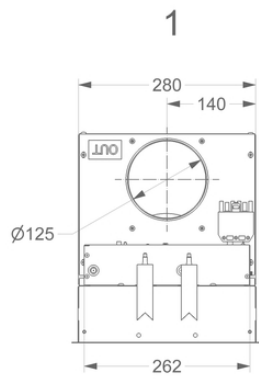
▪ Airflow (m ³ /h) measured according to EN 61591	
▪ Sound regulation according to EN 60704-2-13	
▪ Airflow speed 1 (m ³ /h) / Max Pressure speed 1 (Pa)	172 / 135

Airflow and noise level

▪ Airflow speed 2 (m ³ /h) / Max Pressure speed 2 (Pa)	261 / 265
▪ Airflow speed 3 (m ³ /h) / Max Pressure speed 3 (Pa)	356 / 346
▪ Airflow Powerspeed (m ³ /h) / Max Pressure Powerspeed (Pa)	418 / 381
▪ Sound pressure speed 1 (dB(A)) / Sound power speed 1 (dB(A))	23 / 38
▪ Sound pressure speed 2 (dB(A)) / Sound power speed 2 (dB(A))	31 / 45
▪ Sound pressure speed 3 (dB(A)) / Sound power speed 3 (dB(A))	37 / 51
▪ Sound pressure Powerspeed (dB(A)) / Sound Powerspeed (dB(A))	41 / 55

Technical specifications

▪ Maximum power	146
▪ Voltage (V)	220-230
▪ Frequency (Hz)	50
▪ Length power supply cord (m)	1,3
▪ Power consumption in stand-by-mode (Ps) (W)	0.29
▪ Net weight (kg)	12,5



Installation accessories

Dissociated motor

- 800995

Kit to place motor at distance for canopy Touch

Extension cable

- 7000092

Extension cable 5 m

Additional accessories

- 8002216
- 8002226
- 8002217
- 8002227

Accessories

Recirculation kit



894400

Monoblock recirculation set Touch (388X122x30mm)

Recirculation box



841400

recirculation box with monoblock white (270x500mm)



842400

recirculation box with monoblock black (270x500mm)



843400

recirculation box with monoblock grey (270x500mm)

Control kit



990030

Control kit for external lighting or valve



990021

InTouch Kit incl. remote control

Efficiency Curve

